

UN-GGIM and NSO's

INEGI Coordinator

The SNIEG



Regulations

Published STANDARDS



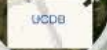
Systematization

INEGI headquarters



Georeferencing of statistical information

Unique Cartographic Data Base



Update

Permanent update of geographic information



Natural Resources and Environment

Information on environment



Internet

Products and publications

Mass

Media

DMM



INEGI

National Institute of Statistics and Geography



INSTITUTO NACIONAL DE ESTADÍSTICA Y GEOGRAFÍA





**INSTITUTO NACIONAL
DE ESTADÍSTICA Y GEOGRAFÍA**

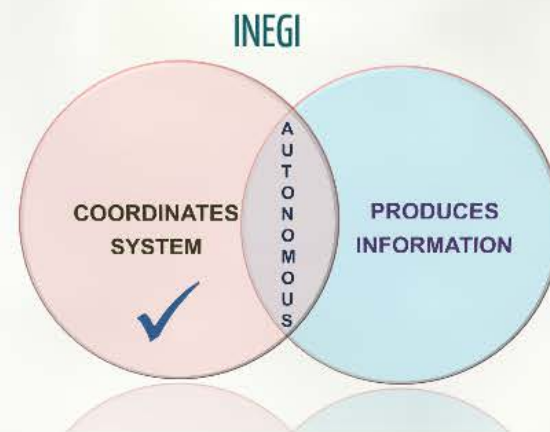
SNIEG 
SISTEMA NACIONAL DE INFORMACIÓN ESTADÍSTICA Y GEOGRÁFICA

UN-GGIM and NSO's: The case of INEGI

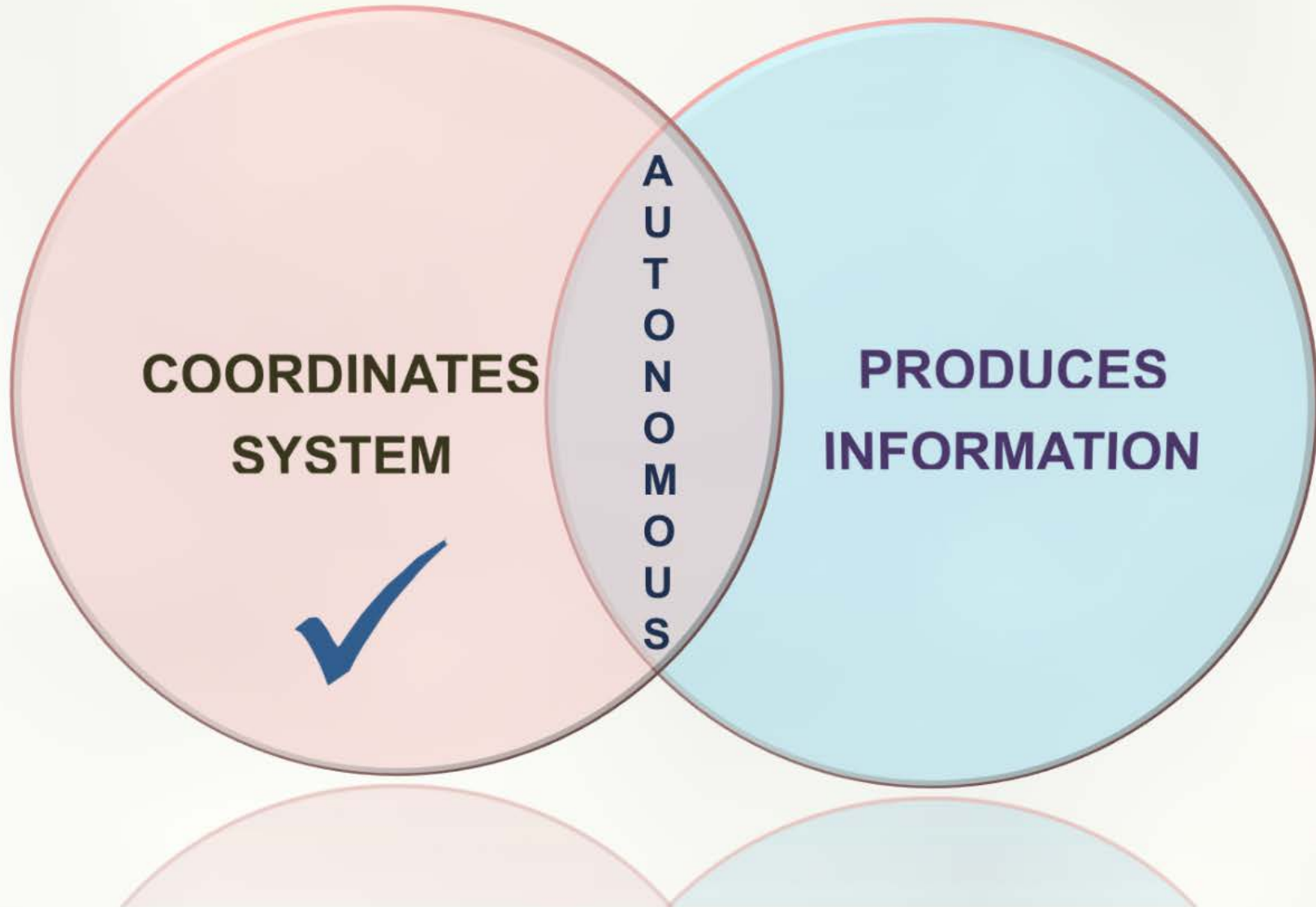


Three key elements characterize the production of information in Mexico:

- Statistical and Geographical Information Responsibilities in the same Institution
- INEGI's autonomy
- The establishment of The National System of Statistical and Geographic Information



INEGI



UN-GGIM and NSO's

INEGI Coordinator

The SNIEG



Regulations

Published STANDARDS



Systematization

INEGI headquarters



Georeferencing of statistical information

Unique Cartographic Data Base



Update

Permanent update of geographic information



Natural Resources and Environment

Information on environment



Internet

Products and publications

Mass

Media



INEGI

National Institute of Statistics and Geography



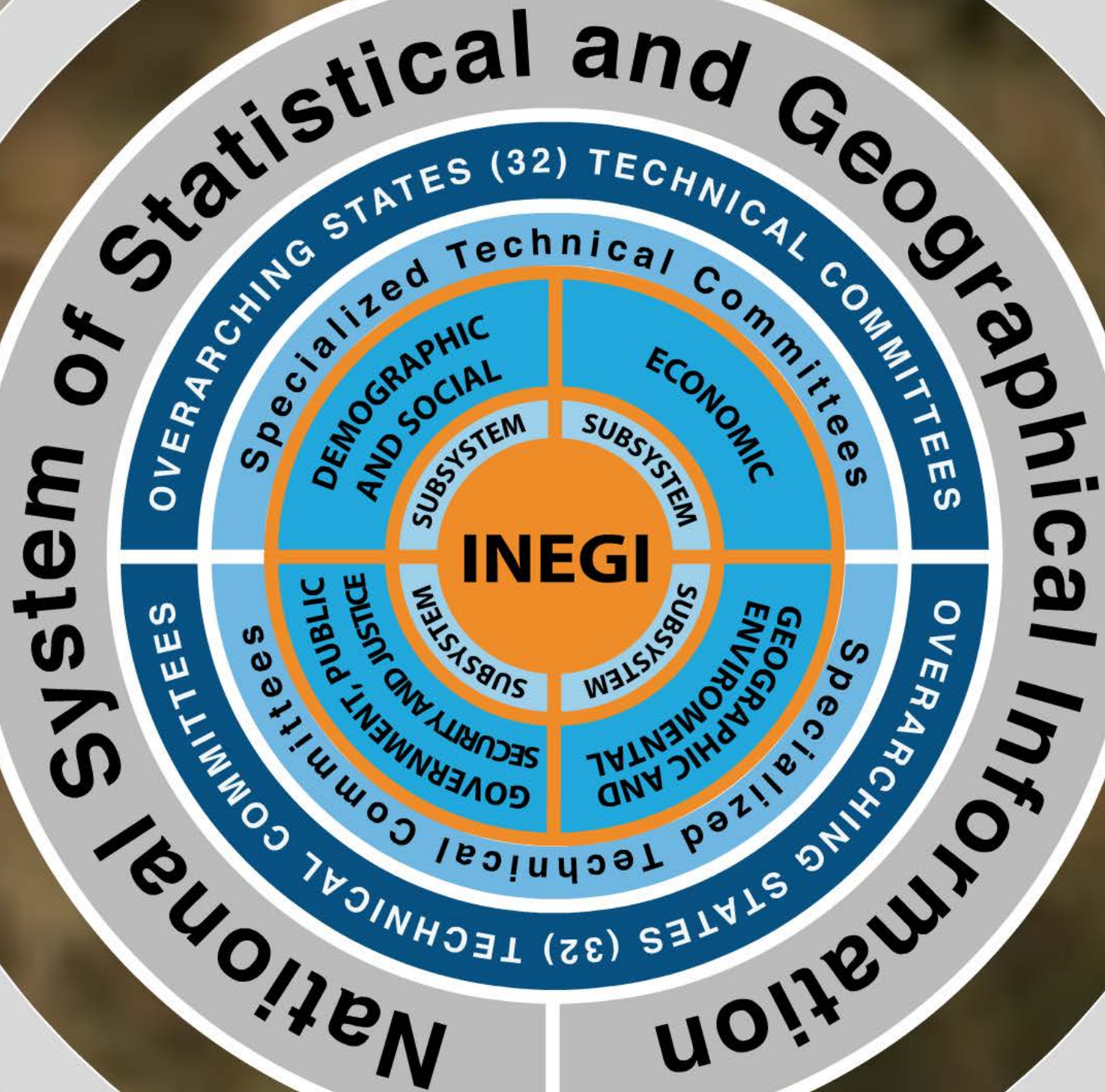
INSTITUTO NACIONAL DE ESTADÍSTICA Y GEOGRAFÍA



INEGI Coordinator

The SNIEG





Specialized Tech

**GEOGRAPHIC AND
ENVIROMENTAL**

SUBSYSTEM

SECT

Specialized Technical Committees



Water



Basic Geographic
Information



Emissions, Waste and
Dangerous Substances



Climate Change



Cadastral Information



Energy Sector



Land use, vegetation and
natural resources

INEGI



Regulations



Published STANDARDS

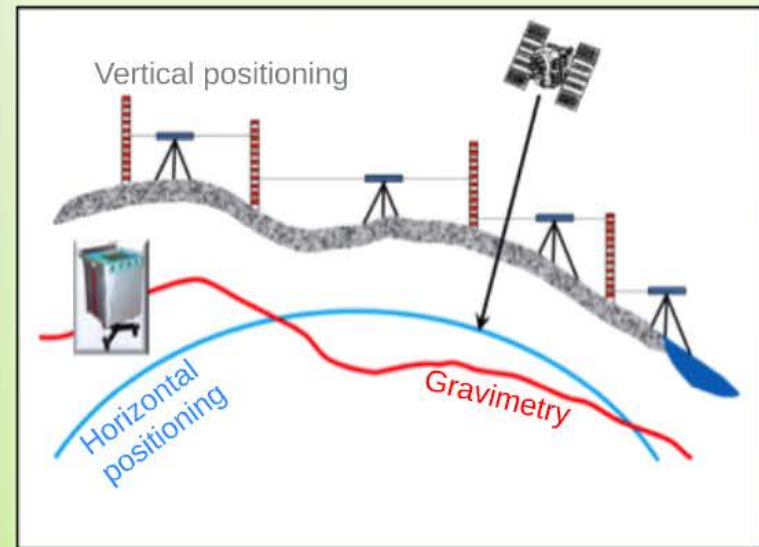


Geographics Addresses



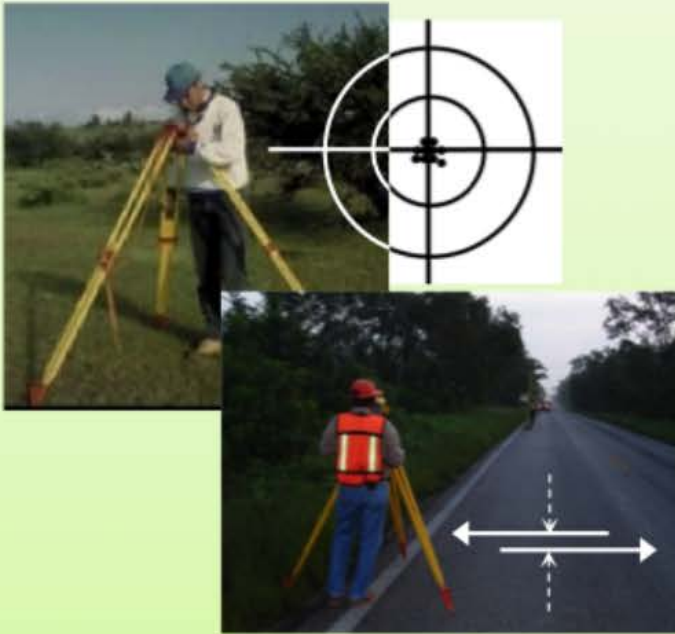
12 Nov. 2010

National Geodesic System



23 Dec. 2010

Positional accuracy standards



23 Dec. 2010

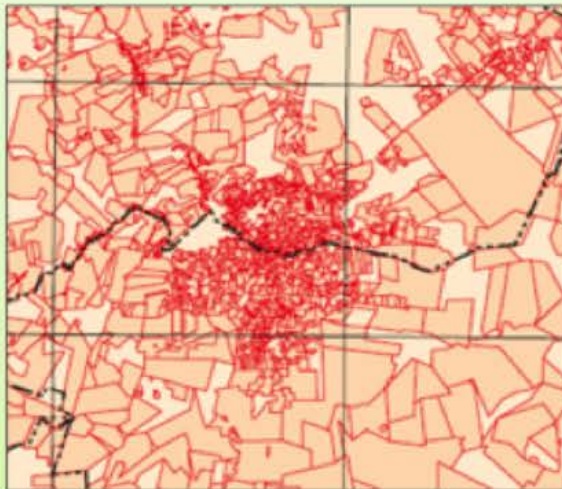
Elaboration of Geographic Metadatos

M
E
T
A
D
A
T
O

- **What:** Title and description
- **Why:** Abstract detail of its existence
- **When:** Time of its creation
- **Who:** Author or data provider
- **How:** Format on how data set was created and how to access them

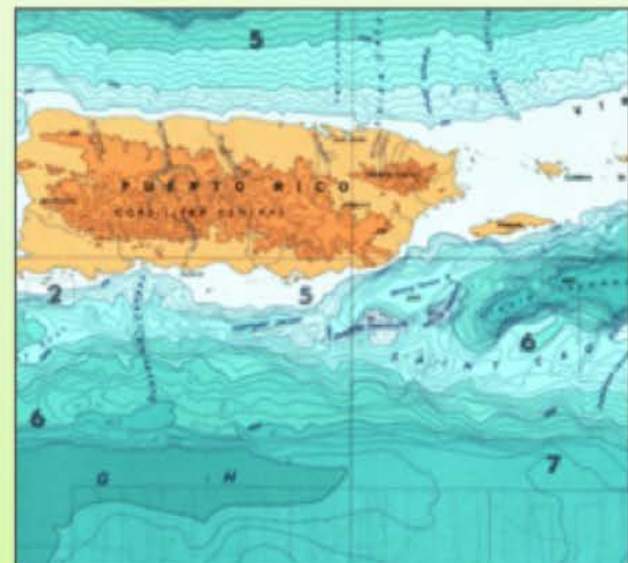
24 Dec. 2010

Generation, capture and integration of cadastral and registry information for statistical and geographic purposes



16 Jan. 2012

Use of glossary for generic terms undersea features



28 Dec. 2012

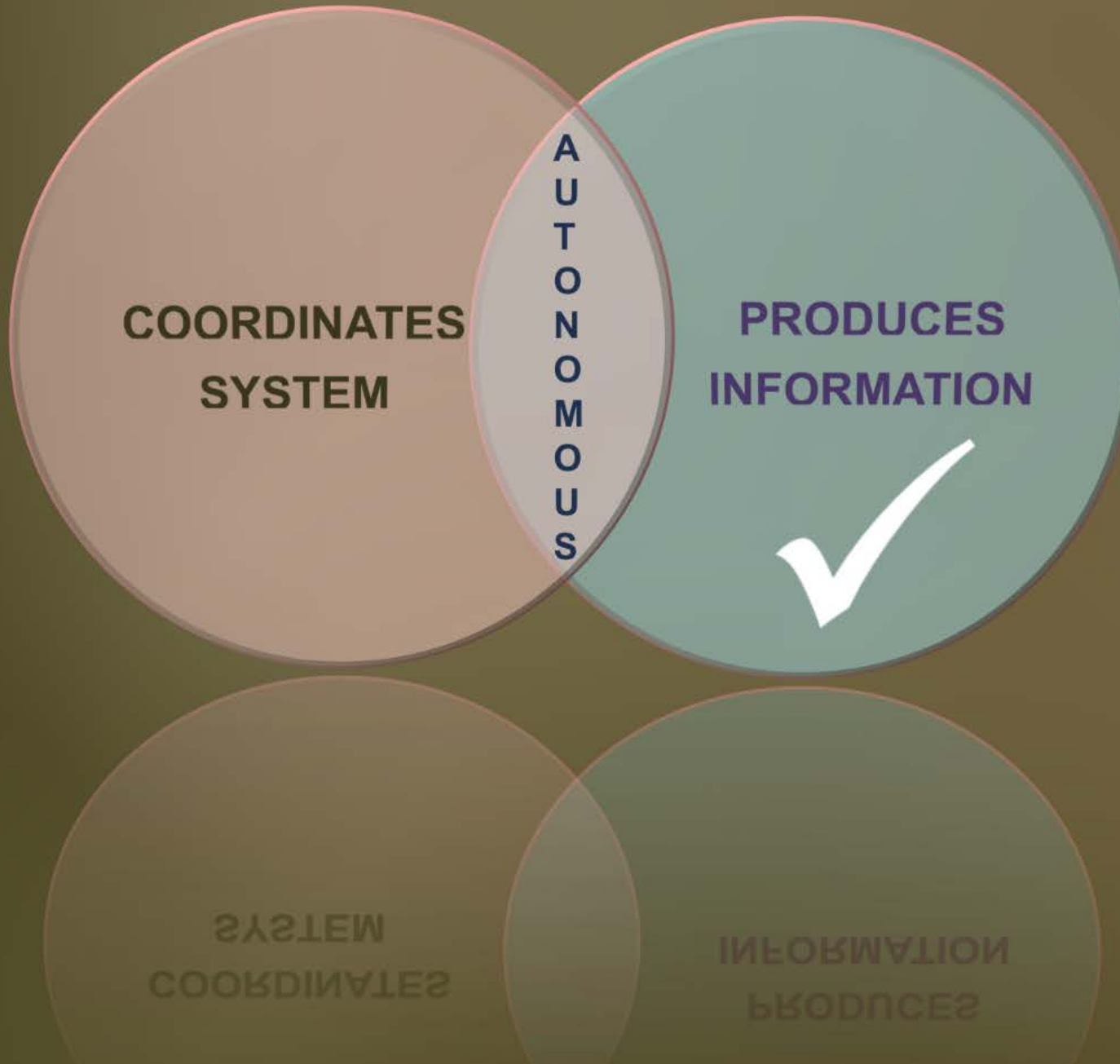


UN-GGIM

United Nations Initiative on
Global Geospatial Information Management

UN-GGIM will
contribute to define
international standards

INEGI



COORDINATES
SYSTEM

A
U
T
O
N
O
M
O
U
S

PRODUCES
INFORMATION



SYSTEM
COORDINATES

INFORMATION
PRODUCES

Georeferencing

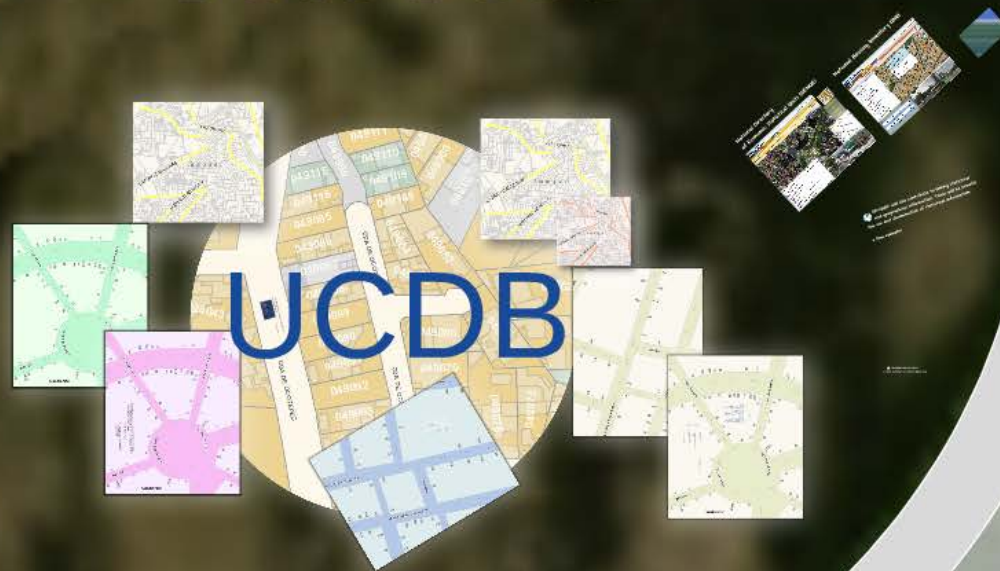
of statistical information

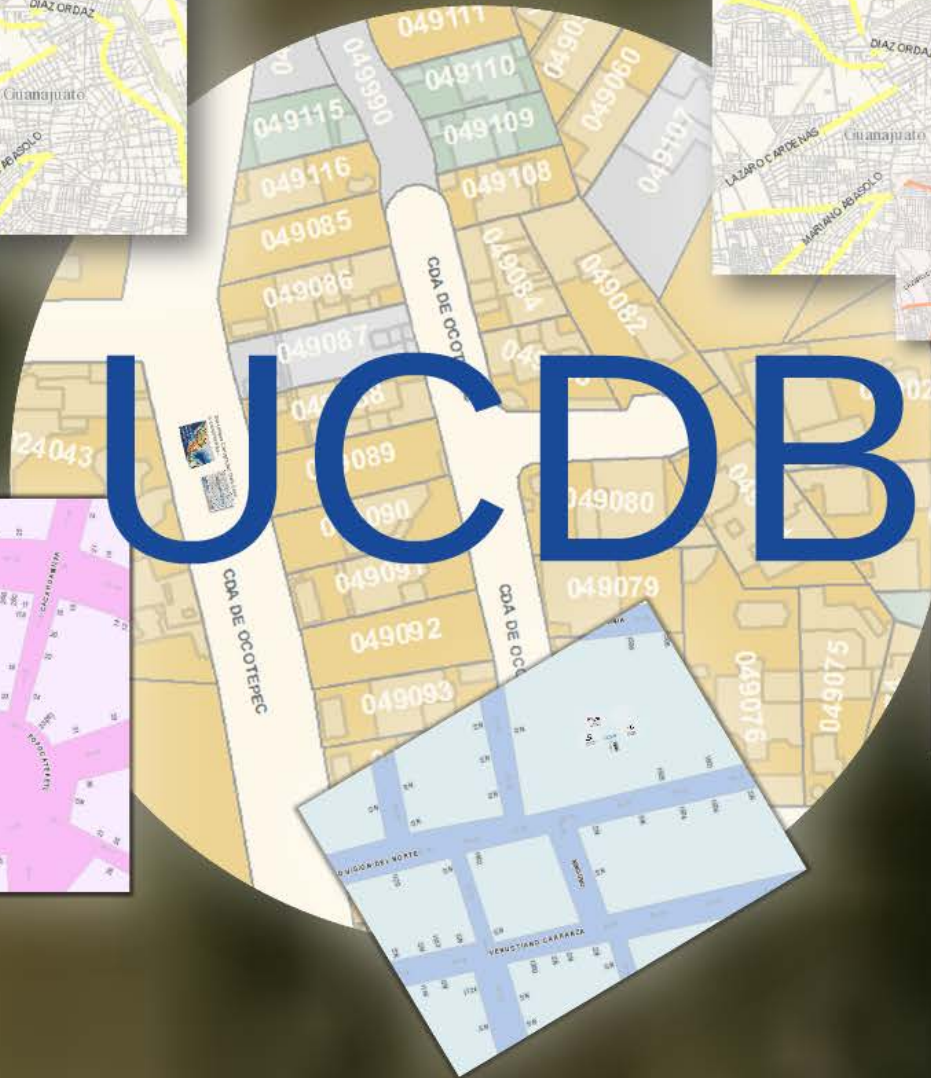
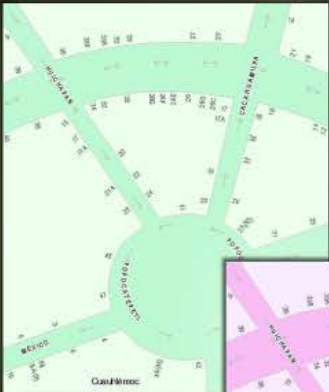
Unique Cartographic
Data Base



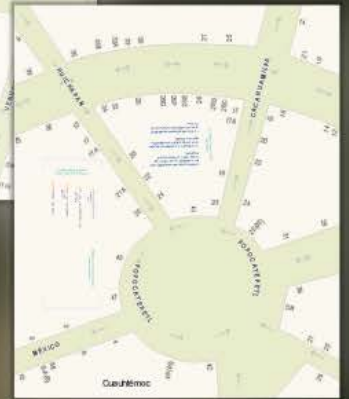
ate

Unique Cartographic Data Base

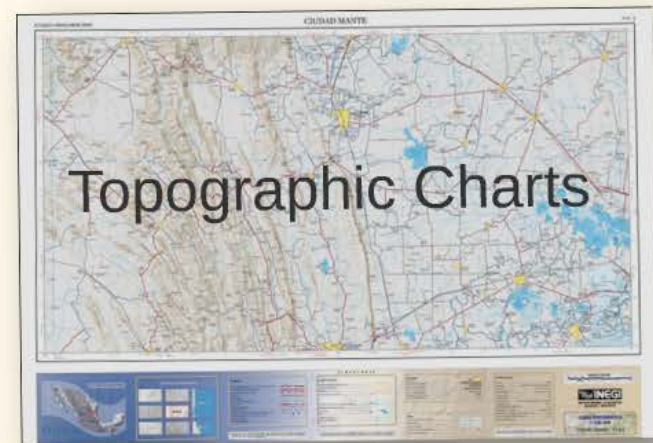
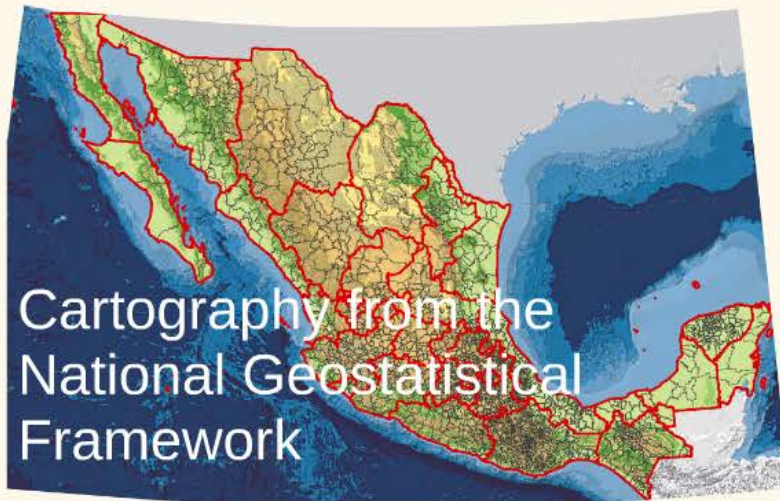




UCDB



The Unique Cartographic Data Base is comprised by...



National Geostatistical Framework

The National Geostatistical Framework (NGF) codifies the entire country into geostatistical areas, with "external numbers" as the maximum level of disaggregation.

It is a homogeneous reference framework that allows for the unambiguous identification of geostatistical areas across the country.

The NGF is updated before and during each national census, and its information is useful at every stage of a census.

National figures of the Geostatistical Framework:

32 Geostatistical state areas

- 31 Federal States
- 1 Federal District

2,457 Geostatistical municipalities areas

- 2,441 Municipalities
- 16 Delegations (F. D.)

299,662 Geostatistical localities

- 4,547 Urban
- 295,115 Rural

2'220,103 Geostatistical blocks

National of the Geostatistical Framework levels



> 32 State Geostatistical Areas



2,457 Municipal Geostatistical Areas



4,547 Urban Geostatistical Localities



47,492 Rural Geostatistical Localities with plans



2'301,542 Total of Roads



2'220,103 Geostatistical Blocks



31'100,512 Street numbers

National figures of the Geostatistical Framework:

32 Geostatistical state areas

31 Federal States

1 Federal District

2,457 Geostatistical municipalities areas

2,441 Municipalities

16 Delegations(F. D.)

299,662 Geostatistical localities

4,547 Urban

295,115 Rural

2'220,103 Geostatistical blocks

National of the Geostatistical Framework levels



➤ 32 State Geostatistical Areas



2,457 Municipal Geostatistical Areas



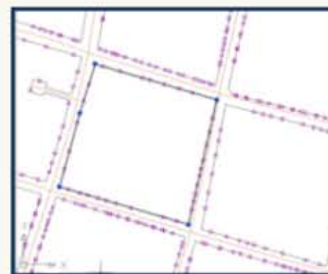
4,547 Urban Geostatistical Localities



47,492 Rural Geostatistical Localities with plans



2'301,542 Total of Roads



2'220,103 Geostatistical Blocks



31'100,512 Street numbers



Zip Codes
and Settlements



INSTITUTO NACIONAL
DE ESTADÍSTICA Y GEOGRAFÍA



Tax Geographical
Framework

UCDB



Electoral
Cartographic

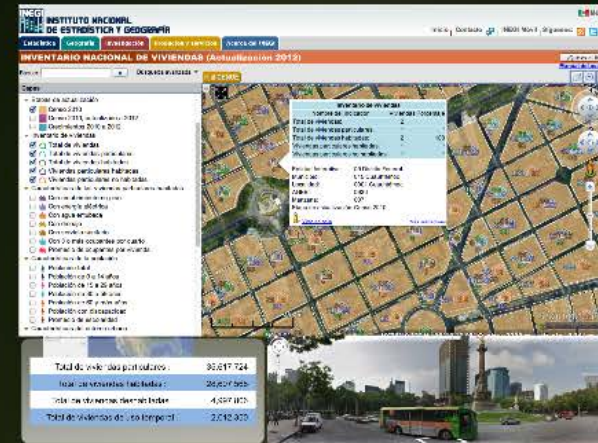
 UN-GGIM will also contribute to linking statistical and geographical information. These will benefit the use and dissemination of statistical information:

a few examples

National Directory of Economic Statistical Units (DENUE)



National Housing Inventory (INV)



UN-GGIM will also contribute to linking statistical and geographical information. These will be benefit the use and dissemination of statistical information: a few examples



Directorio Estadístico Nacional de Unidades Económicas

[¿Qué es el DENUE?](#)

Introduzca su búsqueda:

Búsqueda general:

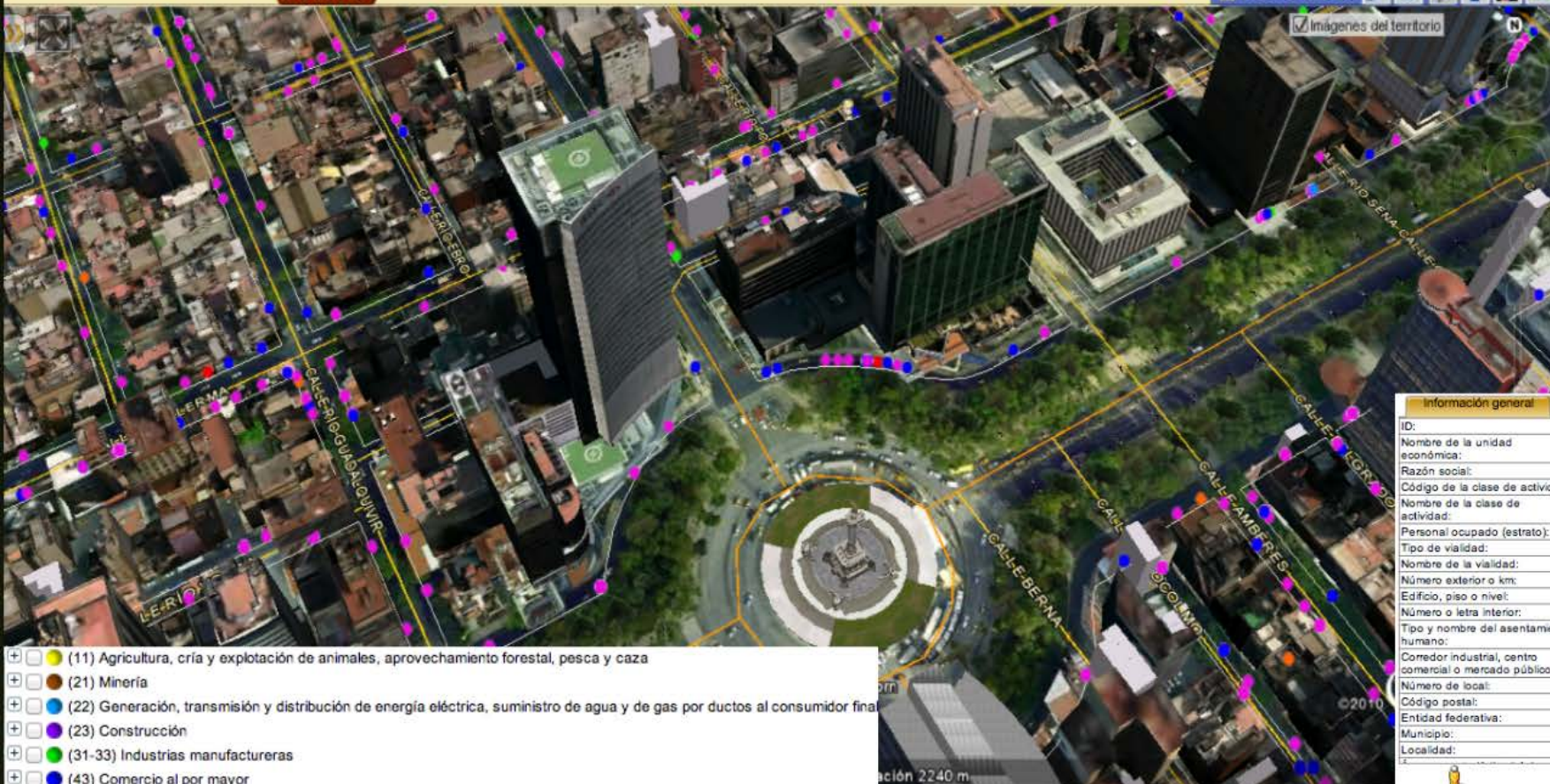
[Nueva búsqueda](#)

Actividad económica ▼ Tamaño del establecimiento ▼ Área geográfica ▼ Variables adicionales ▼

[Ir a INV](#)

Todas las unidades

Imágenes del territorio







DENUE
07/2013

4.4 Millions of Economic Units

Información general	
ID:	4188874
Nombre de la unidad económica:	SHERATON MARIA ISABEL HOTEL AND TOWERS
Razón social:	HOTELES SHERATON S DE RL DE CV
Código de la clase de actividad:	721111
Nombre de la clase de actividad:	Hotels con otros servicios integrados
Personal ocupado (estrato):	251 y más personas
Tipo de vialidad:	AVENIDA
Nombre de la vialidad:	PASEO DE LA REFORMA
Número exterior o km:	325
Edificio, piso o nivel:	
Número o letra interior:	
Tipo y nombre del asentamiento humano:	CUAUHTÉMOC
Corredor industrial, centro comercial o mercado público:	
Número de local:	
Código postal:	
Entidad federativa:	DISTRITO FEDERAL
Municipio:	CUAUHTÉMOC
Localidad:	Cuahtémoc

- (11) Agricultura, cría y explotación de animales, aprovechamiento forestal, pesca y caza
- (21) Minería
- (22) Generación, transmisión y distribución de energía eléctrica, suministro de agua y de gas por ductos al consumidor final
- (23) Construcción
- (31-33) Industrias manufactureras
- (43) Comercio al por mayor
- (46) Comercio al por menor
- (48-49) Transportes, correos y almacenamiento
- (51) Información en medios masivos
- (52) Servicios financieros y de seguros
- (53) Servicios inmobiliarios y de alquiler de bienes muebles e intangibles
- (54) Servicios profesionales, científicos y técnicos
- (55) Corporativos
- (56) Servicios de apoyo a los negocios y manejo de desechos y servicios de remediación
- (61) Servicios educativos
- (62) Servicios de salud y de asistencia social
- (71) Servicios de esparcimiento culturales y deportivos, y otros servicios recreativos
- (72) Servicios de alojamiento temporal y de preparación de alimentos y bebidas
- (81) Otros servicios excepto actividades gubernamentales
- (93) Actividades legislativas, gubernamentales, de impartición de justicia y de organismos internacionales y extraterritoriales



-  Población de 30 a 59 años
 -  Población de 60 y más años
 -  Población con discapacidad
 -  Promedio de escolaridad
- Características del entorno urbano

registradas en la versión anterior del Directorio ahora se presentan 4,410,198.

[Ver más](#)



Total de viviendas particulares :

Total de viviendas habitadas :

Total de viviendas deshabitadas :

Población de 30 a 59 años

Población de 60 y más años

Población con discapacidad

Promedio de escolaridad

Características del entorno urbano

registradas en la versión anterior del Directorio ahora se presentan 4,410,198.

[Ver más](#)

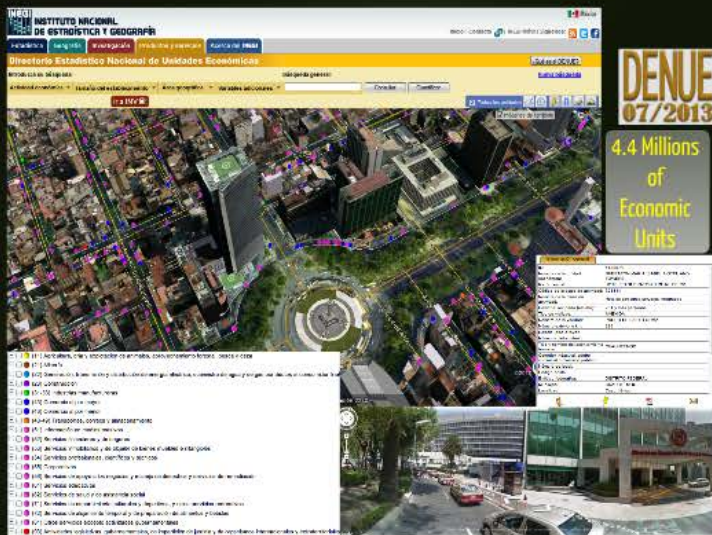


Total de viviendas particulares :

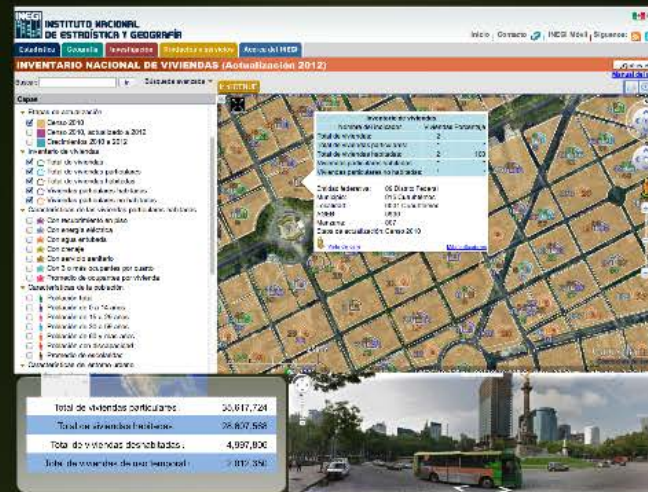
Total de viviendas habitadas :

Total de viviendas deshabitadas :

National Directory of Economic Statistical Units (DENUE)



National Housing Inventory (INV)



INVENTARIO NACIONAL DE VIVIENDAS (Actualización 2012)

¿Qué es el INV? [Manual del usuario](#)

Buscar: Ir Búsqueda avanzada

[Ir al DENEU](#)

Capas

- ▼ Etapas de actualización
 - Censo 2010
 - Censo 2010, actualizado a 2012
 - Crecimientos 2010 a 2012
- ▼ Inventario de viviendas
 - Total de viviendas
 - Total de viviendas particulares
 - Total de viviendas habitadas
 - Viviendas particulares habitadas
 - Viviendas particulares no habitadas
- ▼ Características de las viviendas particulares habitadas
 - Con recubrimiento en piso
 - Con energía eléctrica
 - Con agua entubada
 - Con drenaje
 - Con servicio sanitario
 - Con 3 o más ocupantes por cuarto
 - Promedio de ocupantes por vivienda
- ▼ Características de la población
 - Población total
 - Población de 0 a 14 años
 - Población de 15 a 29 años
 - Población de 30 a 59 años
 - Población de 60 y más años
 - Población con discapacidad
 - Promedio de escolaridad
- ▼ Características del entorno urbano



Total de viviendas particulares :	35,617,724
Total de viviendas habitadas :	28,607,568
Total de viviendas deshabitadas :	4,997,806
Total de viviendas de uso temporal :	2,012,350



Buscar: Ir

Búsqueda avanzada ▾

[Ir al DENUE](#)



Capas

- Imágenes del territorio
- ▾ División geográfica
 - División geoestadística
 - ▾ Localidades
 - ▾ Urbanas
 - Áreas urbanas
 - AGEB.
 - Colonias
 - Vialidades
 - 123 Números exteriores
 - Áreas verdes /Parques
 - Servicios
 - Rurales
 - Topografía
 - Recursos naturales
- ▾ Etapas de actualización
 - Censo 2010
 - Censo 2010, actualizado a 2012
 - Crecimientos 2010 a 2012
- ▾ Inventario de viviendas
 - Total de viviendas
 - Total de viviendas particulares
 - Total de viviendas habitadas
 - Viviendas particulares habitadas
 - Viviendas particulares no habitadas
- ▾ Características de las viviendas particulares habitadas
 - Con recubrimiento en piso
 - Con energía eléctrica
 - Con agua entubada
 - Con drenaje
 - Con servicio sanitario



Buscar: Ir Búsqueda avanzada ▾

[Ir al DENU](#)



Capas

- Imágenes del territorio
- ▼ División geográfica
 - ▶ División geoestadística
 - ▼ Localidades
 - ▼ Urbanas
 - Áreas urbanas
 - AGEB.
 - Colonias
 - Vialidades
 - Números exteriores
 - Áreas verdes / Parques
 - Servicios
 - ▶ Rurales
 - ▶ Topografía
 - ▶ Recursos naturales
- ▼ Etapas de actualización
 - Censo 2010
 - Censo 2010, actualizado a 2012
 - Crecimientos 2010 a 2012
- ▼ Inventario de viviendas
 - Total de viviendas
 - Total de viviendas particulares
 - Total de viviendas habitadas
 - Viviendas particulares habitadas
 - Viviendas particulares no habitadas
- ▼ Características de las viviendas particulares habitadas
 - Con recubrimiento en piso
 - Con energía eléctrica
 - Con agua entubada
 - Con drenaje
 - Con servicio sanitario



Natural Resources and Environment

Information on environment

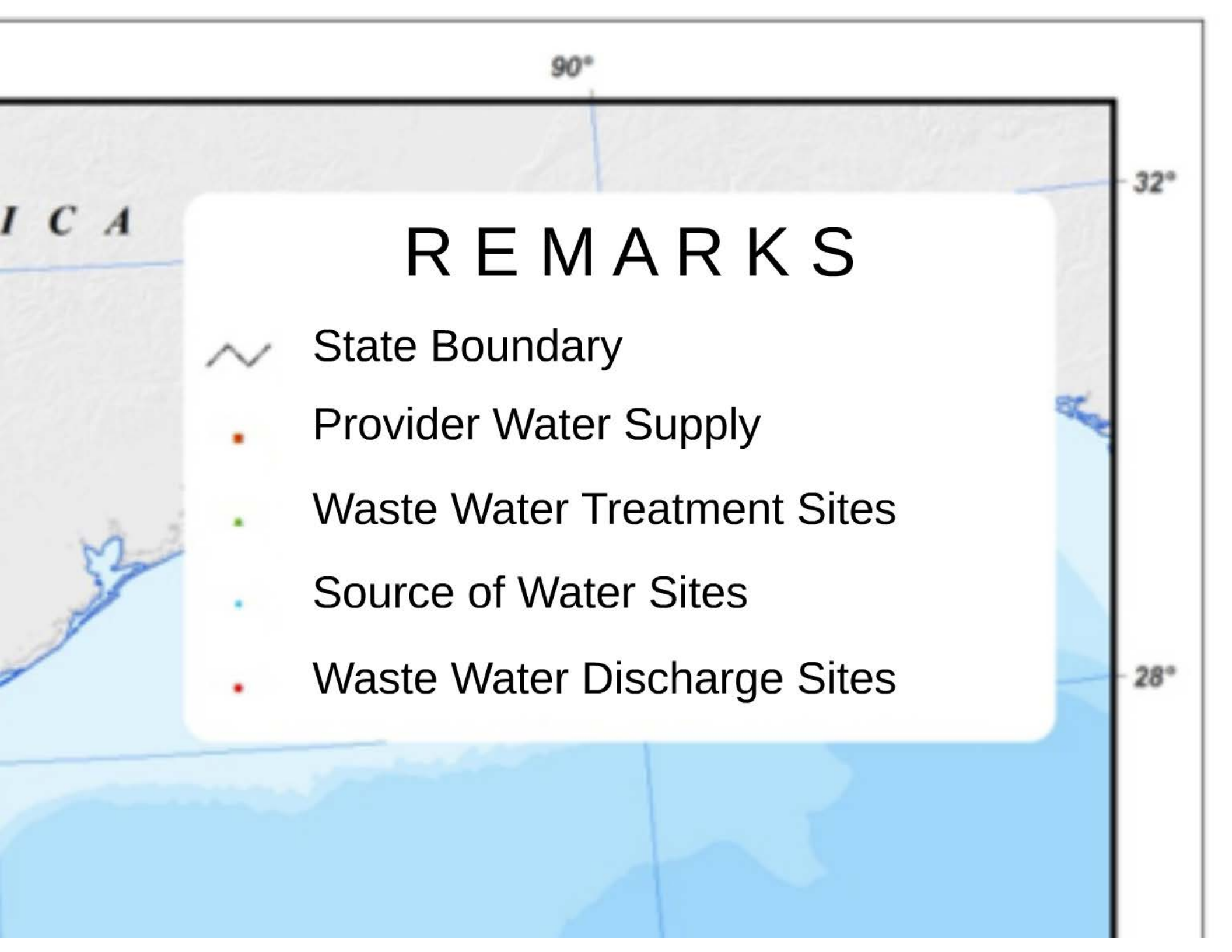


et

Georeferencing of the Environmental information

National Map of the Module of Drinkable Water and Sanitation of the Census of Government Municipalities and Delegations, 2011





I C A

90°

32°

REMARKS

- ~ State Boundary
- Provider Water Supply
- Waste Water Treatment Sites
- Source of Water Sites
- Waste Water Discharge Sites

28°

National Map of the Module of Urban Solid Waste of the Census of Government Municipalities and Delegations, 2011



96°

90°

É R I C A

REMARKS



State Boundary



Transfer Station of Solid Urban Waste



Sites for Disposal of Urban Solid Waste



Provider of Urban Solid waste



Site Treatment of Urban Solid waste

Information on environment



Internet

Mass

Media

Products and publications

DMM



National



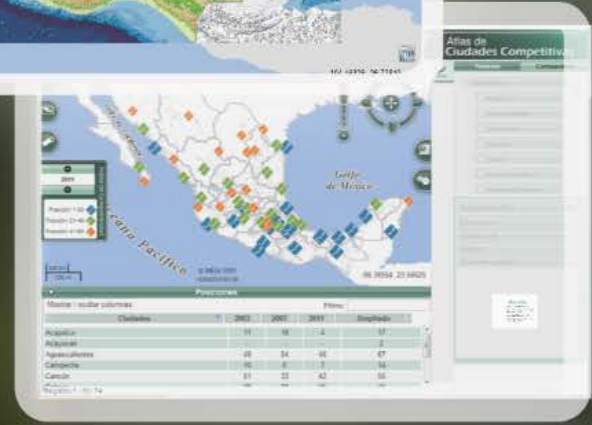
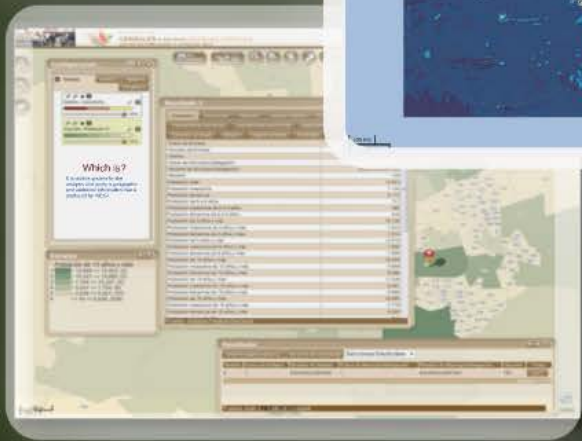
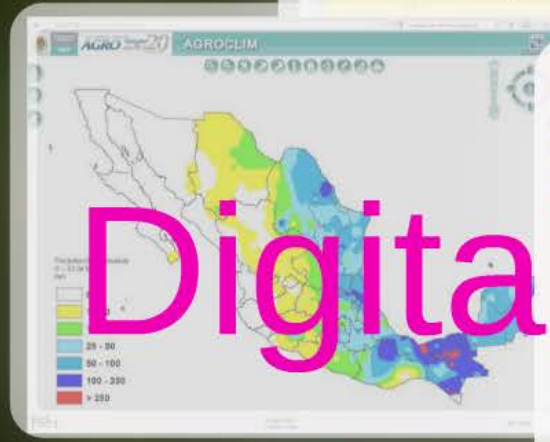
Nat

DMM



Digital Map of Mexico

Digital Map of Mexico



Atlas México

www.atlasnacional.sectra.gob.mx

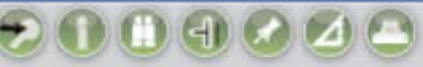
Atlas Nacional de México

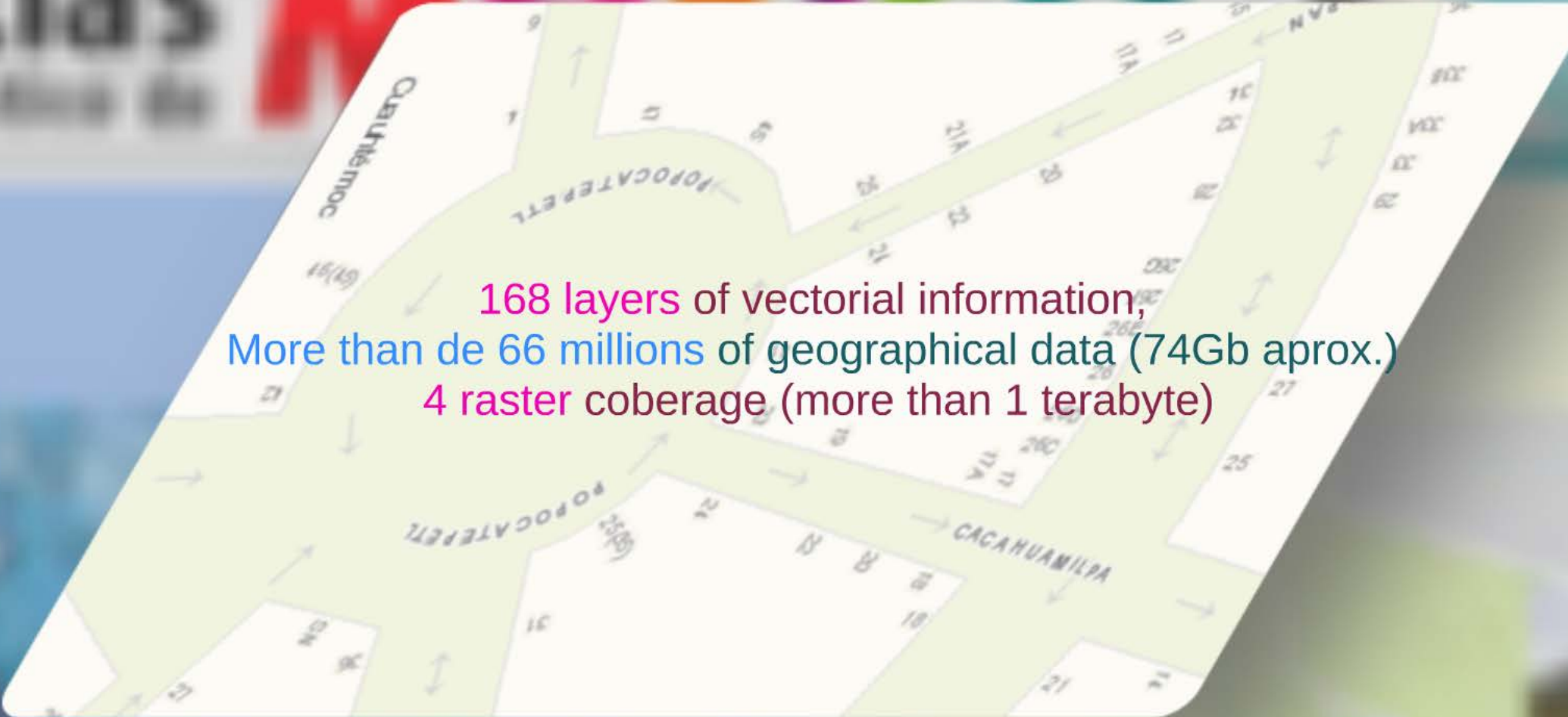
Available information

- Shaded relief data
- Hydrology surface water
- Protected areas
- Geology
- Cartographic framework (Units letter and orthophotos)
- Geodesy (Passive National Geodesic Network)
- Hidrographic features
- Hydrology underground water
- 1,249 Mangroves forest
- Land / soils
- Geostatistical Key Catalogue of State Units, municipalities and localities
- Hydraulic Infrastructure
- Roads maps
- Areas of mud, flood, sandy and marshy
- Geographical addresses and roads directions
- Geographical names
- Digital orthophotos
- Reefs, snow and ice cover and saline water
- 2,103 Wetlands maps
- Land use and vegetation
- Localities (Rural by bricks (47,292))
- Hydrographic (Continuous Base Elevation 3.0)
- Cadastral of social property
- Climate
- Phsiographic map
- Coverage of satellite images
- Urban Localities (4,547)

Mapa digital de México

Photographic





168 layers of vectorial information,
More than de 66 millions of geographical data (74Gb aprox.)
4 raster coberage (more than 1 terabyte)



Geographical names

77,068 Localities
68,124 Hydrographic features
66,552 Orographic features
3,741 Coastal litorals
131 Natural and cultural areas
22,185 Infrastructure

Hidrographic features

Jalisco

7'262,942 Streams
200,996 Bodies of Water

Roads maps



115 Airports

154,793.17 km Highways
Includes: Federal, state and municipal

1'185,492.29 km Roads
Includes: Gaps, Sidewalks, Earthworks

20,642 km Railways, roads

160 Tollbooths

An aerial orthophoto of a city street grid, tilted at an angle. A yellow marker is placed on a building in the upper right quadrant. A semi-transparent white box in the lower right contains text. The background is a blurred map of the world.

Digital orthophotos

12,915 | 1:20 000

A covering 1'928,133 km²

13,334 | 1:10 000

A covering 507,661 km²



Reefs, snow and ice cover and saline water

54 Arrecifes

8 Nieves perpetuas

67 Salinas

A map of Europe with various regions highlighted in different colors: blue, green, yellow, orange, and red. The text 'Protected areas' is overlaid on the map in a large, dark green font. Below it, the text '1,042 Zonas de veda' is displayed in a smaller font, with '1,042' in pink and 'Zonas de veda' in green.

Protected areas

1,042 Zonas de veda

Land use and vegetation

Serie / Year / Layers

I	1985	1
II	1993	5
III	2002	14
IV	2007	13
V	2011	13

59 Vegetation classes

193 Combinations

4 Agriculture classes

20 Combinations

Leyenda

Bosque de ayarin

Bosque de cedro

Bosque de encino

Bosque de encino-pino


Bosque de galeria

Bosque de mezquite

Bosque de oyamel

Bosque de pino

Bosque de pino-encino

A map of the state of Durango, Mexico, showing its geographical boundaries and internal municipal divisions. The state is highlighted in yellow. Major municipalities labeled include La Joya, San José de la Parrilla (La Parrilla), San Francisco Javier, and Vicente Guerrero. A road with a shield-shaped marker containing the number 45 is also visible. The map is overlaid on a light blue background with a faint globe pattern.

Geostatistical Key Catalogue

of State Units, municipalities and localities

32 State Units
2,457 Municipalities
4,547 Urban localities
295,115 Rural localities

Geographical addresses and roads directions

The screenshot displays the INEGI website interface. At the top, the logo reads 'INSTITUTO NACIONAL DE ESTADÍSTICA Y GEOGRAFÍA México'. The main area features a map of Mexico City with a search bar and navigation tools. Below the map, there are two panels: 'Resultados' and 'Buscar'.

Resultados

Clave	Tipo de localidad	Nombre de la localidad	Nombre del municipio	Código postal	Estado, Municipio, Distrito	Acciones
1104	AVENIDA	HEROJE DE NAZARÍ	DEZARROLLO ESPECIAL INCU	22076	Aguascalientes, Aguascalientes, DESARROLLO ESPECIAL INCU	

Buscar

Búsqueda general... Búsqueda específica...

Texto a buscar
heroje de nazari 2201, aguascalientes

Cerrar al ejecutar búsqueda

Ejemplo:
Búsqueda simple: Adolfo López Mateos, Aguascalientes
Cruce de calles: Adolfo López Mateos, Aguascalientes - Carretillo 1814

Localities

Rural by blocks (47,292)

2'273,663 Outer numbers
803,772 Blocks
908,696 Streets
247,623 No blocks

Includes roads directions



Urban Localities (4,547)

28'016,047 Outer numbers
52,524 Urban AGEB
1'340,974 Blocks
1'565,997 Streets*
173,672 Services:
27,871 Green Areas
3,423 Cemetery
11,370 Medical center
67,950 Schools
3,744 Marketplace
3,758 Government palace
4,180 Squqre
50,413 Temple
963 Other

* Includes roads directions

UN-GGIM and NSO's

INEGI Coordinator

The SNIEG



Regulations

Published STANDARDS



Systematization

INEGI headquarters



Georeferencing of statistical information

Unique Cartographic Data Base



Update

Permanent update of geographic information



Natural Resources and Environment

Information on environment



Internet

Products and publications

Mass

Media



INEGI

National Institute of Statistics and Geography



INSTITUTO NACIONAL DE ESTADÍSTICA Y GEOGRAFÍA

